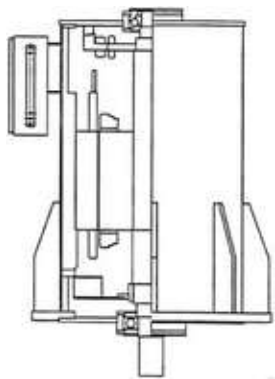


Design forms

Following design forms are available:

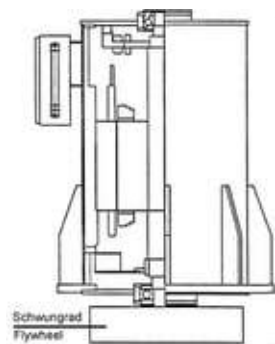
- [Design V1](#)
- [Design B3](#)
- [Design B16](#)

Design V1



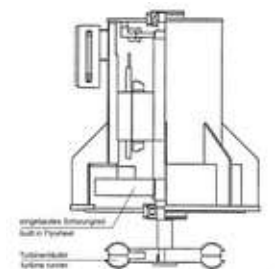
Design V1 (Variance A) Vertical design with:

- 2 bearing shields
- 2 roller bearings
- housing without mounting feet
- mounting flange
- free shaft end (DE) for loose coupling
- overall shaft length. max. 2,9m
- grease duct (DE)
- regreasing pipe lead out at DE side



Design V1 (Variance B) Vertical design with:

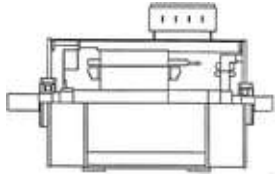
- 2 bearing shields
- 2 roller bearings
- housing without mounting feet
- mounting flange
- free shaft end (DE) for loose coupling for flywheel or turbine runner
- conical tube with oil pressure torque limiter (max. 190mm)
- overall shaft length. max. 2,9m
- grease duct (DE)
- regreasing pipe lead out at DE side



Design V1 (Variance D) Vertical design with:

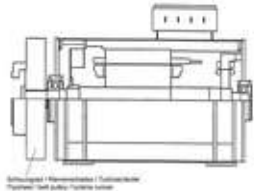
- 2 bearing shields
- 2 roller bearings
- housing without mounting feet
- mounting flange
- free shaft end (DE) for built in flywheel and external turbine runner (max. 190mm)
- conical tube with oil pressure torque limiter (max. 190mm)
- overall shaft length. max. 2,9m
- grease duct (DE)
- regreasing pipe lead out at DE side

Design B3



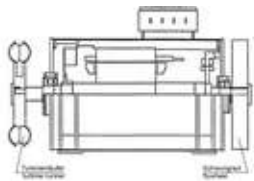
Design B3 (Variance S) Horizontal design with:

- 2 bearing shields
- 2 roller bearings
- housing with mounting feet
- 1 or 2 free shaft ends for loose clutch (DE / NDE)



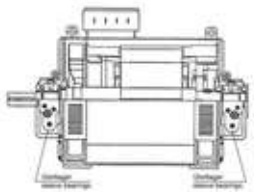
Design B3 (Variance K) Horizontal design with:

- 2 bearing shields
- 2 roller bearings
- housing with mounting feet
- 1 free shaft end (DE) for flywheel or turbine runner
- overall shaft length. max. 2,9m
- conical tube with oil pressure torque limiter (max. 190mm)
- regreasing pipe lead out at DE side



Design B3 (Variance T) Horizontal design with:

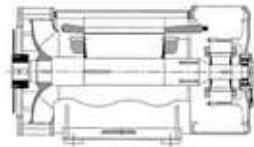
- 2 bearing shields
- 2 roller bearings
- housing with mounting feet
- 2 free shaft ends (DE/NDE) for flywheel and turbine runner
- overall shaft length. max. 2,9m
- conical tube with oil pressure torque limiter (max. 190mm)
- regreasing pipe lead out at (DE and NDE side)



Design B3 (Variance W) Horizontal design with:

- 2 bearing shields
- 2 sleeve bearings
- housing with mounting feet
- 1 free shaft end (DE) for loose clutch
- overall shaft length. max. 2,9m

Design B16

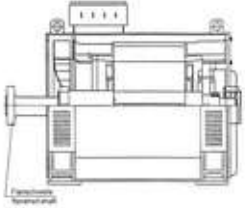


Design B16 (Variance E) Horizontal design with:

- 1 bearing shields
- 1 roller bearings
- housing with mounting feet
- 1 free shaft end (disc)
- overall shaft length. max. 2,9m

Design B16 (Variance U)

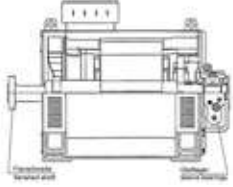
Horizontal design with:



- 1 bearing shields
- 1 roller bearings
- housing with mounting feet
- 1 free shaft end (flange)
- overall shaft length. max. 2,9m

Design B16 (Variance V)

Horizontal design with:



- 1 bearing shield
- 1 sleeve bearing
- housing with mounting feet
- 1 free shaft end (flange)
- overall shaft length. max. 2,9m